

SHORT BIO

Following a B.Eng. degree in Safety Engineering at Beijing Institute of Technology (BIT, 2014), China, I was offered a PhD project in Mechanics, at BIT, China.

In 2021 I was offered a position as an assistant professor at the State Key Laboratory of Lunar and Planetary Science in Macau University of Science and Technology (MUST), Macau, China. I operate and maintain the impact loading facilities of the laboratory, and research on impact dynamics for planetary craters.

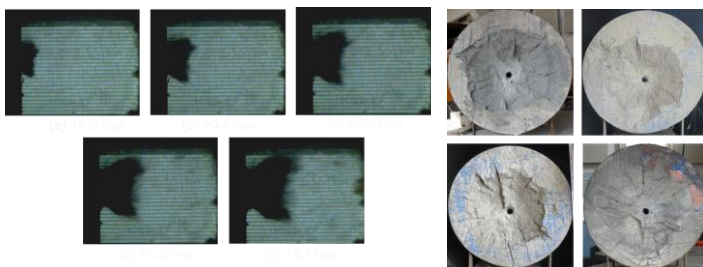
Asst. Prof.

Yang-Yu Lu



PhD: Mechanics– Beijing Institute of Technology, China

B.Eng. : Mechanics Engineering– Beijing Institute of Technology, China



Lu, Y., et al., 2021

KEY PUBLICATIONS *(first author)*

Lu, Y., et al., 2021.

*Hypervelocity penetration of concrete targets with long-rod steel projectiles: experimental and theoretical analysis. **International Journal of Impact Engineering.***

Lu, Y., et al., 2020.

*Hypervelocity Impact Cratering on Semi-Infinite Concrete Targets of Projectiles with Different Length to Diameter Ratios. **Applied Sciences.***

Lu, Y., et al., 2020.

*High-velocity impact performance of aluminum and B4C/UHMW-PE composite plate for multi-wall shielding. **Applied Sciences.***

PROFESSIONAL EXPERIENCE

Ongoing – 2021 – Macau University of Science and Technology, Macao (China) – Asst. Prof.

02/2014—06/2014 – University of Toronto, Toronto (Canada) – Visiting scholar

GRANTS

Applying